



HQ – Bali

+62 813 8423 0193  
(Italian – English)

Representative office - Italy

+39 345 344 5912  
(Italian)

[info@seasidecatamarans.com](mailto:info@seasidecatamarans.com)

Exclusive distributor Australia

Mr. John Unite

+44 7780 568 563

+62 851 9014 0675

[johnunite@gmail.com](mailto:johnunite@gmail.com)

## SEASIDE 13.20 POWER



[www.seasidecatamarans.com](http://www.seasidecatamarans.com)

*Space and comfort merge into a single concept, the hallmark of the Seaside 13.20 Power. In this yacht, Seaside Catamarans aimed to create a comfortable vessel designed for long distances, with ample storage and comfort for extended stays at sea.*

*This catamaran is broad and stable, focusing on lifestyle and onboard comfort.*

*The exterior volumes are unmatched for vessels in this segment, offering a high level of livability and comfort in every area. The flybridge is step-free, and the centrally located and slightly recessed helm console allows for the development of a sunbathing area that can accommodate up to 5 people. Additionally, a spacious living area with a L-shaped sofa, teak table, and a bar counter equipped with a refrigerator and sink provides the perfect spot to enjoy the best hours of the day from this beautiful terrace.*

*The bow is easily accessible with protected side decks and features a comfortable and modular relaxation area.*

*The main deck is designed for maximum utilization, furnished with high-quality elements and precious materials, creating a play of refined color combinations that give the entire structure a classy configuration upon entering the salon. The kitchen adjacent to the entrance is notably spacious, fully equipped, and designed to be easily connected to the cockpit, which is roomy and set up with a table and C-shaped sofa, ideal for outdoor dining.*

*The salon is completed with two additional elegant sofas, two tables, the bar counter and the chart table.*

*Below deck, in the hulls, two different configurations are available: owner's cabin, two double cabins, and two bathrooms, or alternatively, four double cabins and two bathrooms. Both solutions offer total livability of the spaces; all cabins feature generous windows, ensuring ample natural light and a pleasant ambiance.*



## TECHNICAL SPECIFICATION

Overall length: 13,20 mt – 43,30 ft

Max beam: 5,60 mt – 18,37 ft

Draft: 0,60 mt – 1,96 ft

Design category: B12 – C16 – D20

Beds: 6 - 8 pax

Engine: 2 x inboard diesel 280 hp shaft

Fuel tank: 2 x 450 lt

Water tank: 2 x 240 lt

Waste water tank: 2 x 87 lt







# ENGINE & PROPULSION

- 2 x inboard diesel engine 280 hp - 2 x stainless steel shaft
- 2 x fixed pitch propeller - Soundproof panels in engine rooms
- Propulsion and speed control panels with levers on helm station
- **Rudder & steering system**
- 2 x bronze rudder - Hydraulic steering system - Helm station on the flybridge
- **OPTION**
- 2 x inboard diesel 380 hp shaft
- 2 x outboard Mercury 200 hp - 2 x outboard Mercury 300 hp - 2 x outboard Mercury 380 hp

# MAIN DECK

## Set-up and accessories

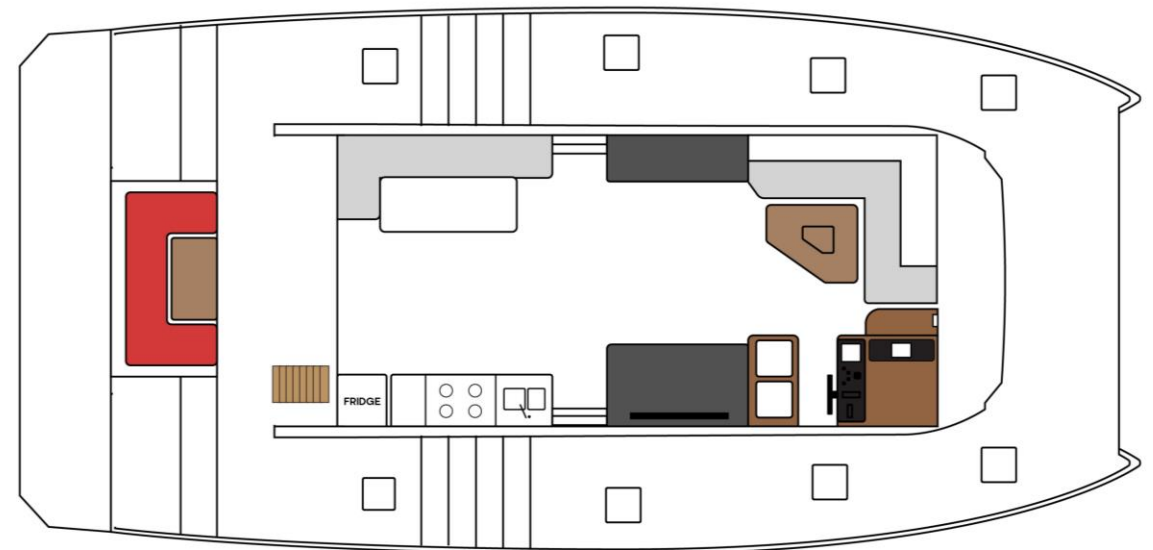
Fixed platform at stern - 2 x stainless steel ladder  
Safety equipment and fenders locker Fuel fillers - Water fillers  
Black and grey water discharge outlets  
Stainless steel handrails - 2 x engine room inspection hatches  
Anchor locker Windlass – Fender - Stainless steel cleats and fairleads

## Doors and windows

Fixed windows on the deckhouse - Portholes  
Sliding aluminum door for access to the deckhouse - 4 x manhole

## Main deck set up (cockpit and bow) as per layout

C shape sofa with integrated lockers at stern Teak table  
Flybridge access ladder - Lounge at bow





# THE DECKHOUSE

## Interiors as per layout

Vinyl flooring

2 x L-shaped sofa

2 x table

Chart table

Bar counter

## Kitchen

280 Lt refrigerator + freezer

Sink and faucet

Gas stove 3 burners

Gas oven

Cabinets and drawers







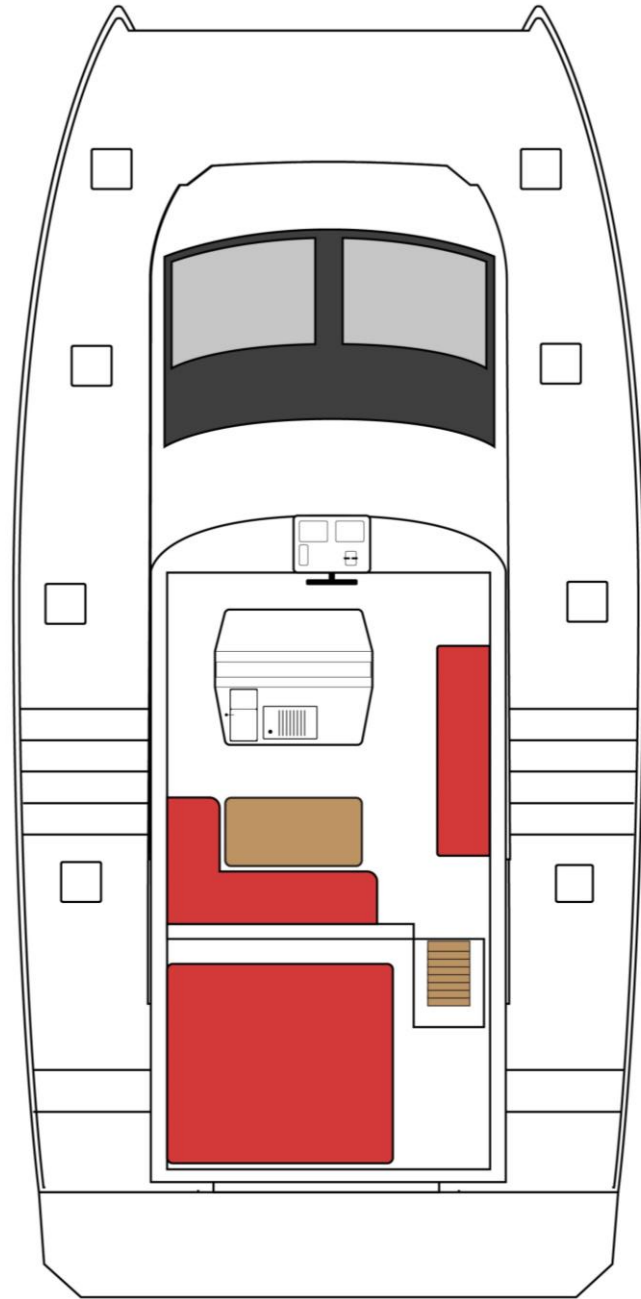
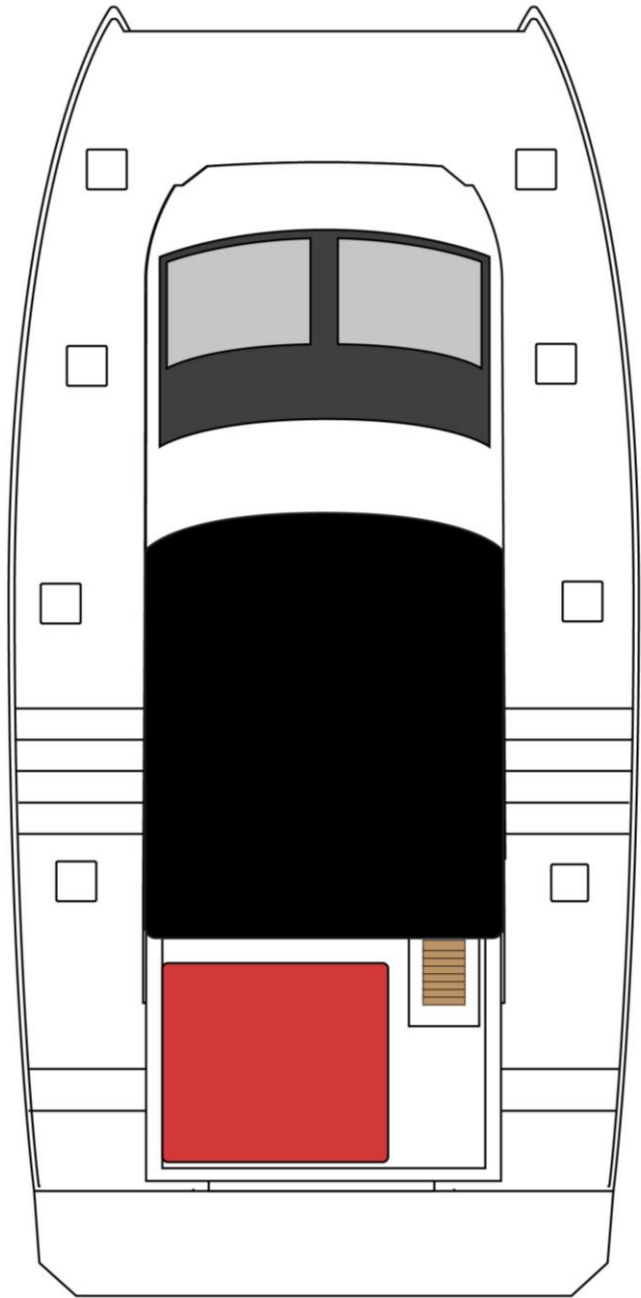




# FLY BRIDGE

Helm station - Captain chair - L shape sofa with integrated lockers  
Teak table - Straight sofa - Large sunbed - Stainless steel handrails  
Hard top





# INTERIOR LAYOUT

- Master bedroom with bathroom – 2 x  
guest bedroom – 1 bathroom

- 4 x guest bedroom – 2 x bathroom

- Master bedroom as per selected layout

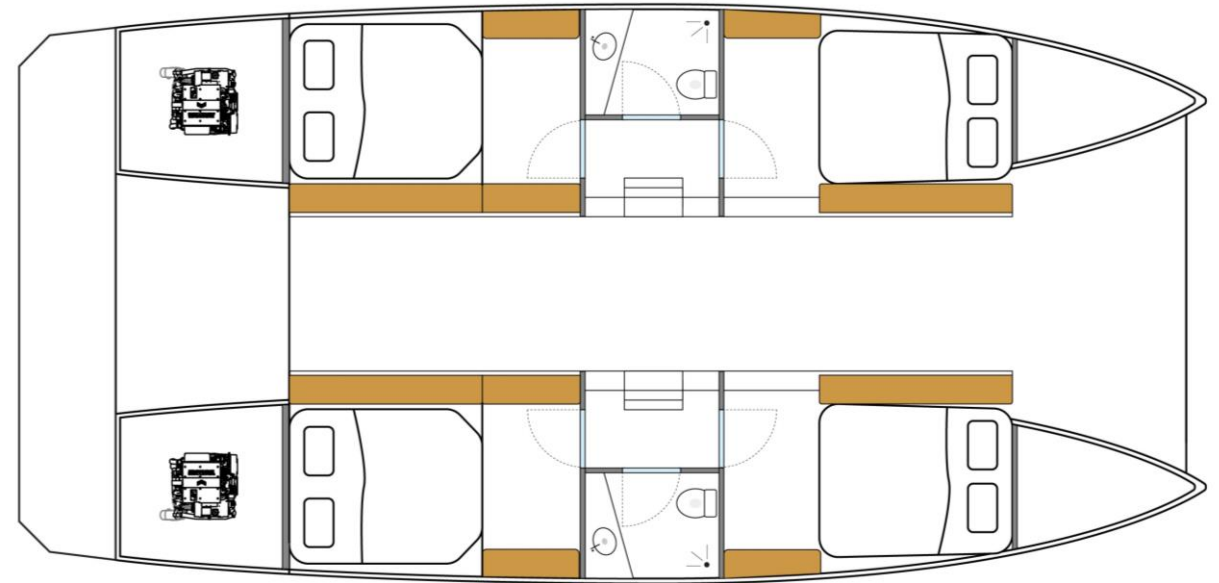
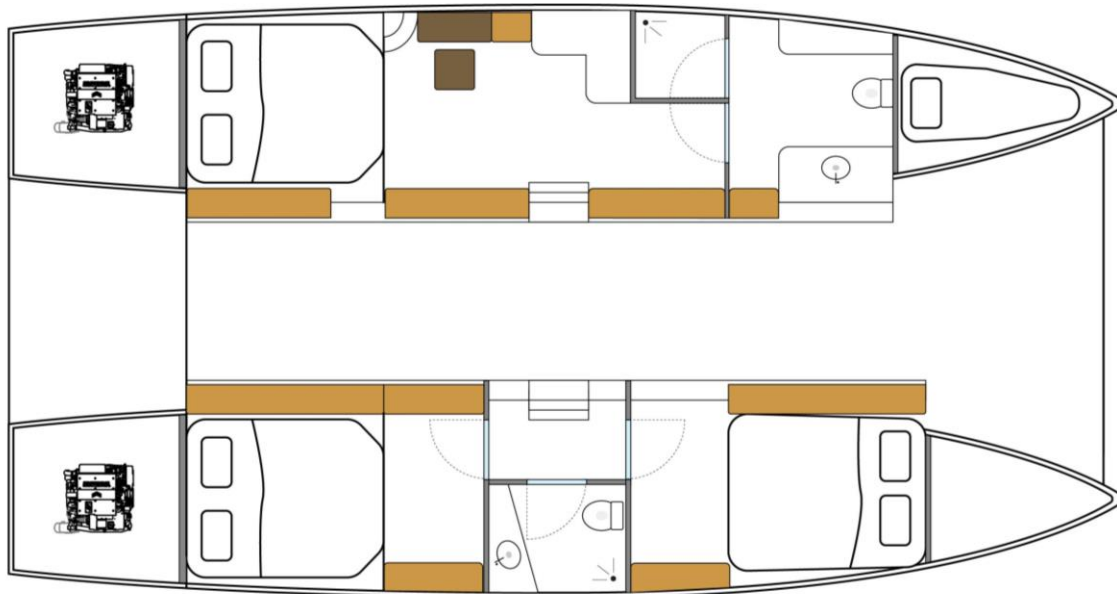
Vinyl flooring - Double bed with mattress - Reading lights - Wardrobe and drawers  
Table and armchair

- Double bedroom as per selected layout

Vinyl flooring - Double bed with mattress - Reading lights - Wardrobe and drawers

- Bathrooms as per selected layout

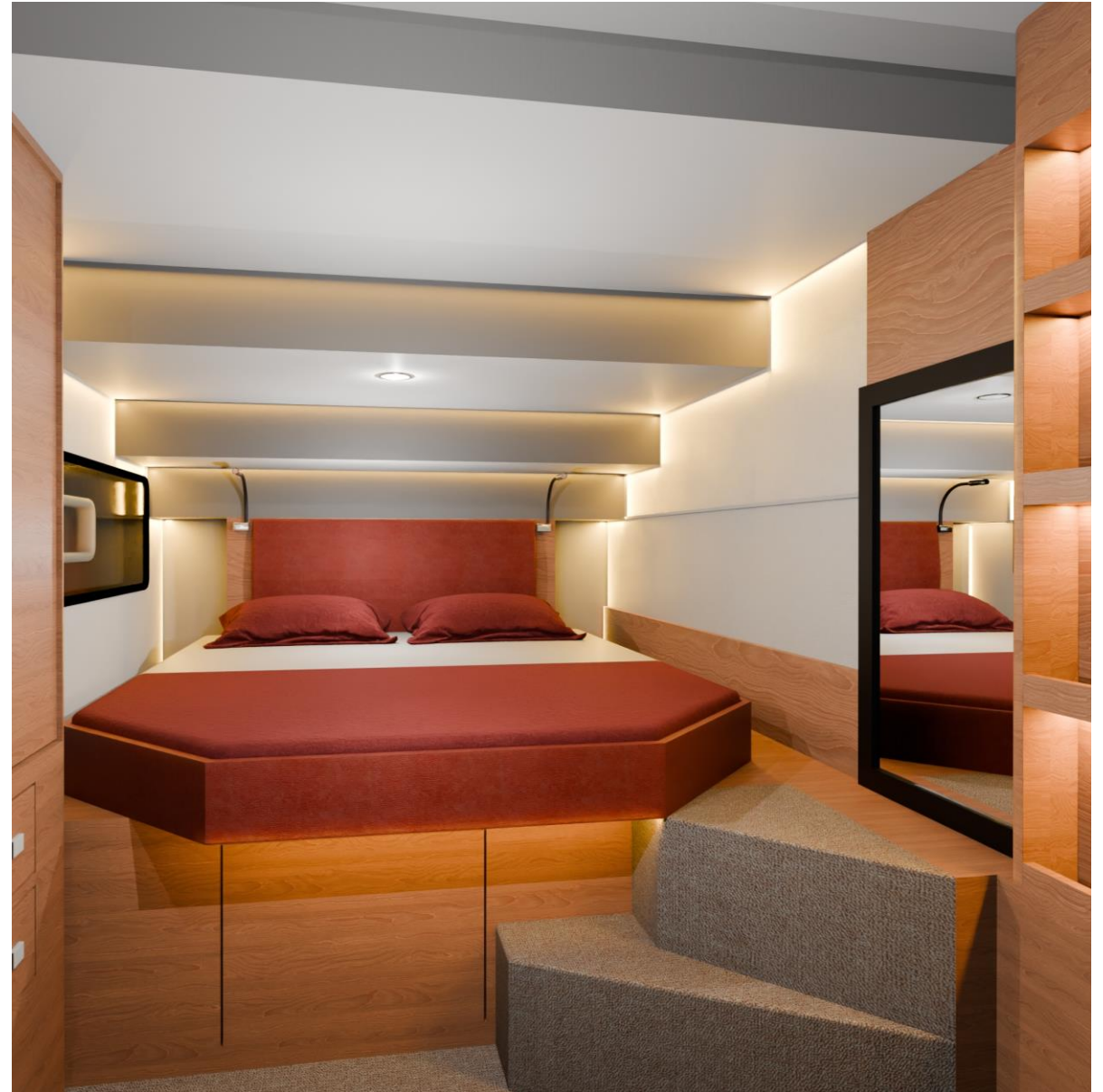
Vinyl flooring – Manual WC - Shower - Sink and faucet -- Accessories -- Cabinet













## LIGHTS

### Lighting system

LED lights on the main deck, cockpit and flybridge

LED lights interiors -- Lights in the engine room

## NAVIGATION

Navigation lights -- Compass -- Horn



## ELECTRIC SYSTEM

### AC electrical power system

230V system and wiring -- 230V control panel -- External 230V socket

230V sockets: one in each cabin, two in the salon, one in the bathroom, two in the galley

USB sockets for charging: two in each cabin, two in the salon one in the dashboard

### DC electrical power system

12V system and wiring -- 12V control panel -- Engine start batteries -- Utility batteries

## SYSTEMS AND PIPING

### Fuel system

2 x 450 lt fuel tank -- Fuel filters

### Fresh water system

2 x 240 lt water tank -- 2 x water pressure pump -- Water distribution system -- Water heater

### Grey water system

2 x 130 lt grey water tank -- Drainage system

### Black water system

2 x 87 lt black water system -- Drainage system

### Bilge system

4 x automatic bilge pump -- 2 x hand bilge pump -- Pipes and valves

### Firefighting system compliant with RINA regulations

2 x automatic fire extinguisher in engine rooms -- 3 x fire extinguisher