

Seaside
CATAMARANS

HQ – Bali

+62 813 8423 0193
(Italian – English)

Rapresentative office - Italy

+39 345 344 5912
(Italian)

info@seasidecatamarans.com

Exclusive distributor Australia

Mr. John Unite

+44 7780 568 563
+62 851 9014 0675
johnunite@gmail.com

Seaside 54 Power



www.seasidecatamarans.com



Seaside 54 Power is the power-driven version of the same size as the Seaside Sail Collection, a range of catamarans designed for those who want to sail further, in total comfort and style

Bold design and engineering choices, with a linear and refined character, create a yacht with exceptional sailing performance and extraordinary beauty, expressed through its highly futuristic and revolutionary design

SEASIDE 54 Power

Sailing in a sea of space

The features of the Seaside 54 Power include maximum comfort and spacious living areas, unparalleled in other boats of the same size: 74 sqm of outdoor area and 62 sqm of indoor area. Those who choose a catamaran seek large spaces, and the Seaside 54 Power generously provides them.

One lives outdoors at the bow where there are two comfortable sunbathing areas and two lounges with sofas and tables, in the cockpit where you can dine or relax in the two lounges, on the flybridge which hosts additional sofas and a table, in addition to the helm area. These spaces offer boundless livability and an extraordinary sense of freedom.

However, the utmost attention has been dedicated to the interior spaces, presenting innovative solutions such as the creation of spacious cabins at floor level rather than in the narrow spaces of the hulls. There are various interior layouts, but all share a common feature: the large saloon that houses the dining area, kitchen, and the large windows that offer an uninterrupted perspective, turning the inside of the boat into a 360-degree spectacle.

The rooms and bathrooms are located at floor level, hence larger than the norm. The available layouts cater to every possible need of the owner, with spacious rooms and bathrooms, comfortable lounges, and crew cabins always available. The choice to utilize the entire floor level for the interiors allows for the optimal use of space in the hulls dedicated to technical services.

The underwater body has been designed exclusively considering sailing performance, without any habitability constraints.

Bow

The lateral walkways lead safely to the bow area where you can access the generous sunbathing area.

Flybridge

Another strong point of the Seaside 54 Power is the sizable flybridge, accessible both from the stern via the wide staircase and from the bow through the two side ladders. The flybridge hosts the helm area and a lounge consisting of two teak sofas and a table that can be transformed into a sunbathing area.



TECHNICAL SPECIFICATIONS

Overall length	16,47 mt – 54,00 ft
Hull length	16,00 mt – 52,49 ft
Max beam	8,65 mt – 38,27 ft
Draft	1,40 mt – 4,60 ft
Light weight / Full load weight	14.000 kg / 17.500 kg
Design category	CE A10 – B16 – C20 – D35
Beds	8 – 10
Engine	2 x inboard diesel 400 hp shaft
Fuel tank	3.000 lt
Fresh water tank	1.200 lt
Black water tank	600 lt
Design	Seaside Catamarans
Construction material	Sandwich – polyester resin - glass





ENGINE - PROPULSION - MANEUVERING EQUIPMENT

Propulsion

2 x inboard diesel engine 400 hp - 2 x shaft - 2 x fixed pitch propeller

Soundproof panels in engine rooms - Propulsion and speed control panels with levers on helm station

Rudder & steering system

2 x bronze rudder - Rudders stocks - Emergency rudder - Hydraulic steering system
External helm station on the flybridge

DECK EQUIPMENT

Anchor equipment

Windlass locker - Windlass 1600W
Anchor Lewmar 25 kg in galvanized steel
Anchor rope + 50 mt chain in galvanized steel

Mooring

Stainless steel cleats and fairleads
8 x fender with rope - Mooring ropes

Accessories

2 x side platforms at stern - 2 x stainless steel ladder - Fixed central platform at stern
Safety equipment locker - Fender locker - Windlass - 2 x fuel fillers - 2 x water fillers
2 x black and grey water discharge outlets - 2 x engine room access hatches - Stainless steel handrails

EXTERIOR

Hull paint

Hull and deck in gelcoat

Deck

Composite with non-slip

Doors and windows

Fixed and sliding windows on the deckhouse - Portholes - Sliding aluminum door for access to the deckhouse
8 x manhole

Deck furniture (stern and bow) as per layout

2 x L-shape sofa with cushions in the cockpit - 2 x teak table - Access ladder to the fly bridge - Walkaround
2 x sunbed at bow with cushions and integrated lockers - 2 x bow lounge with cushions and teak table

Fly bridge furniture

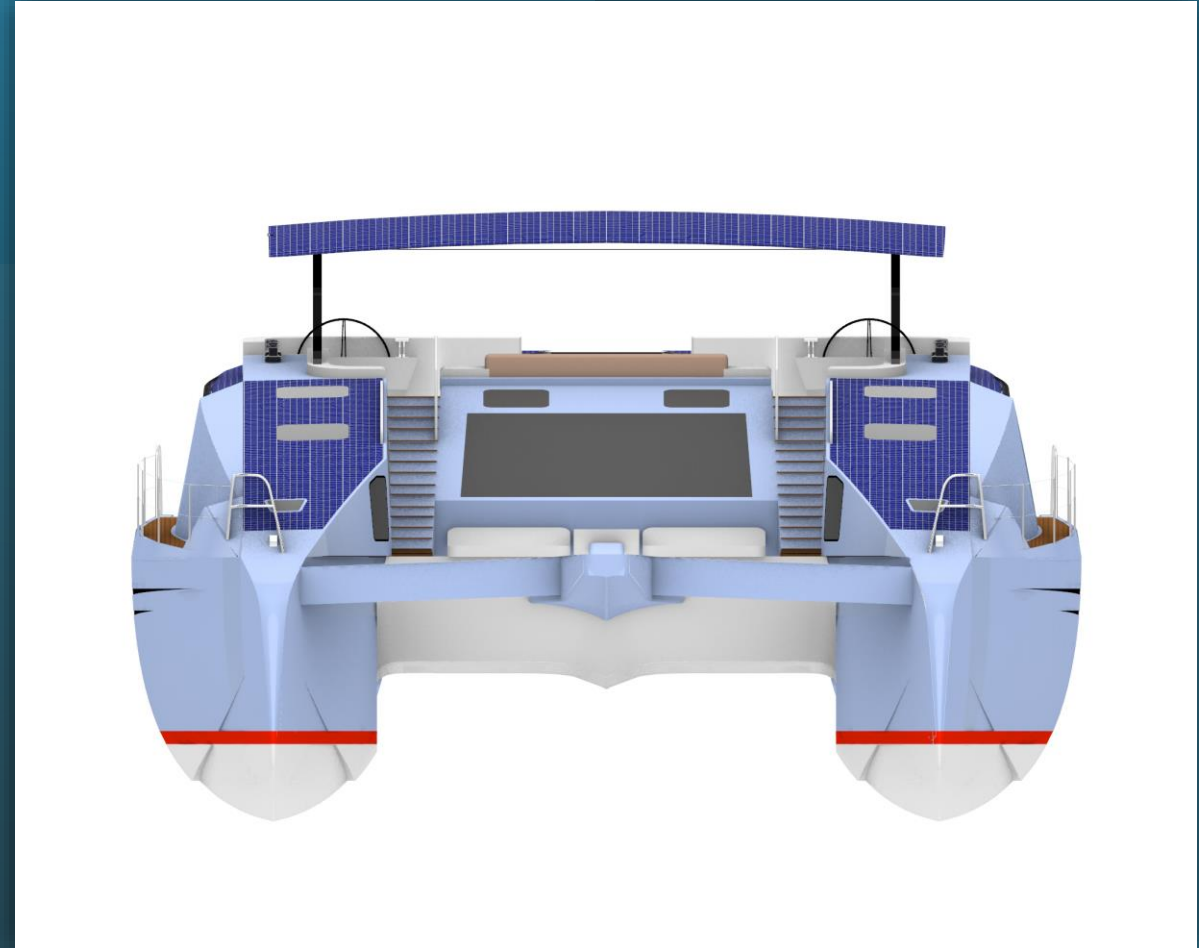
2 x L-shape sofa with cushions - Teak table - Bar counter with 65 lt refrigerator
Kitchen set with electric stove and faucet - 2 x access ladder to the bow

Helm station on the fly bridge

Captain chair - Dashboard

NAVIGATION

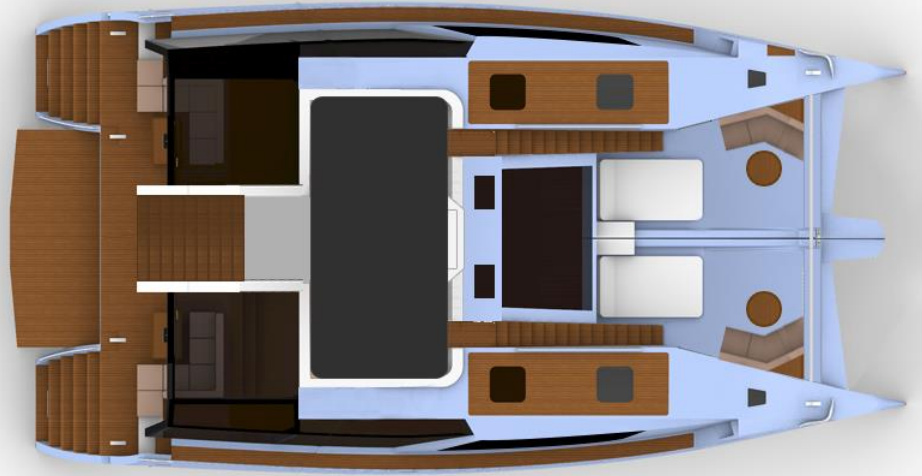
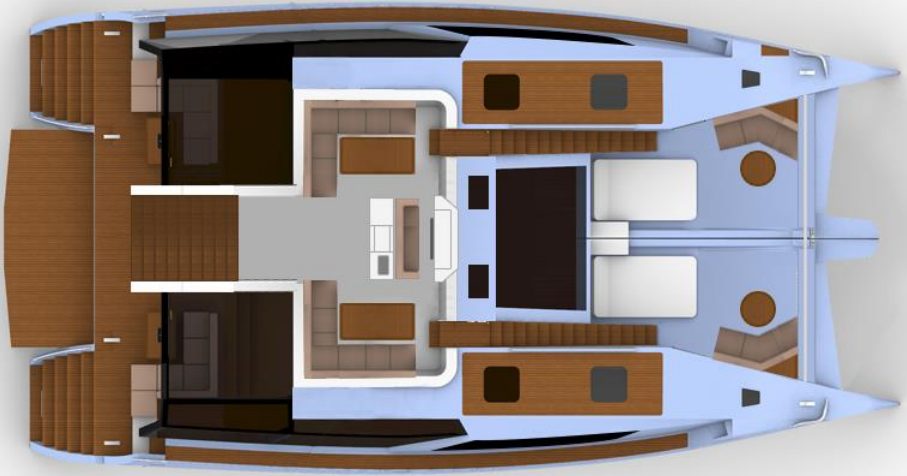
Navigation lights - Compass - Horn



LIGHTS

Lighting system

LED lights on deck and cockpit - LED lights interiors - Lights in the engine room



Layout n.1

4 double bedrooms – 4 bathrooms – 2 crew cabins with bathroom

L A Y O U T 1



L-shaped sofa - Teak table – U-shape sofa – Teak table - Chart table with seat - Vinyl flooring

Kitchen - equipment and appliances as per list

280 Lt refrigerator - Sink and faucet - Electric stove - 3 burners - Oven - Cabinets and drawers

4 double bedrooms

Vinyl flooring - Double bed with mattress and drawers - Reading lights - Wardrobe and drawers

4 bathrooms

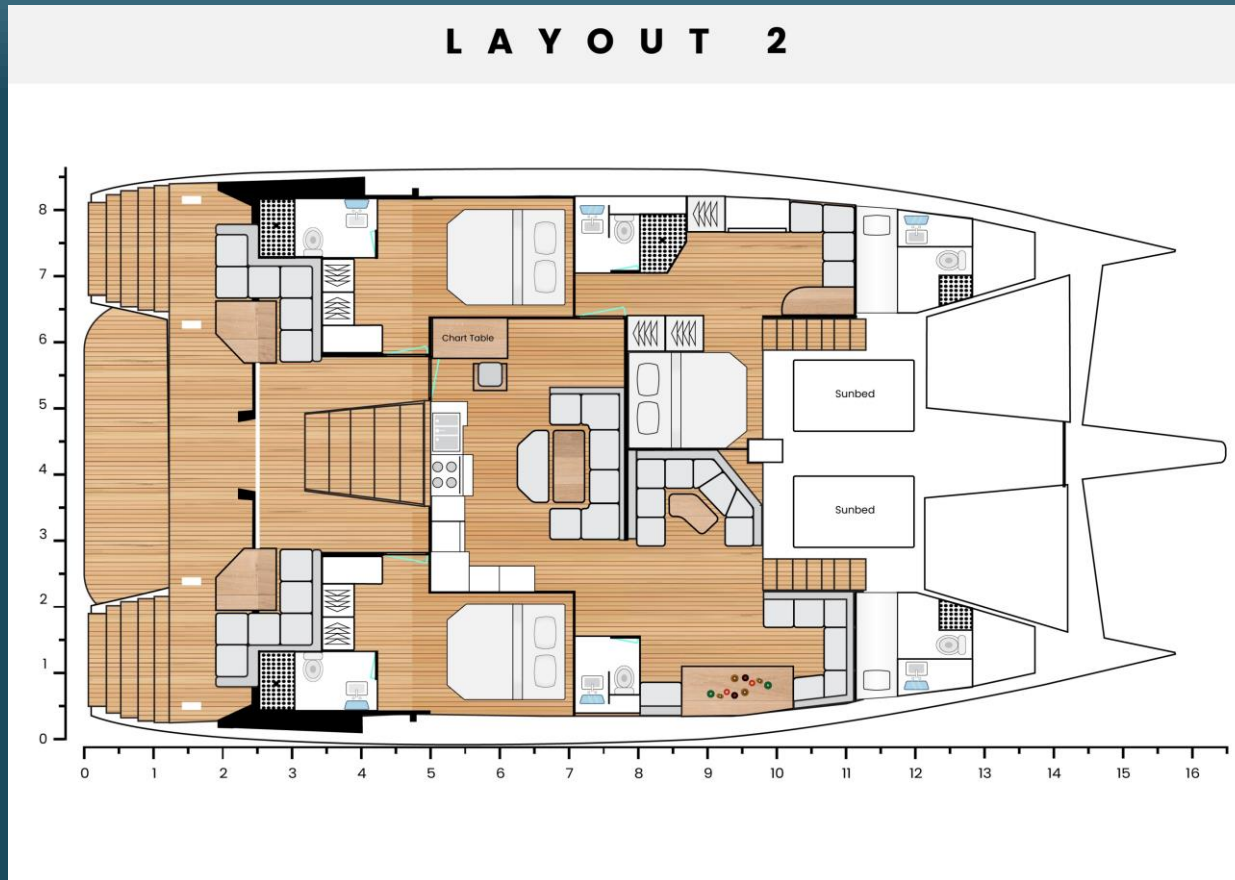
Vinyl flooring - Manual WC – Shower - Sink and faucet – Accessories - Cabinet

2 crew cabins

Single bed with mattress – Cabinet – Manual WC – Sink - Shower

Layout n.2

1 master bedroom - 2 double bedrooms – 4 bathrooms – 2 crew cabins with bathroom



2 x C-shaped sofa – 2 x teak table – Chart table with seat – Lounge with bar counter and sofa on the right side - Vinyl flooring

Kitchen - equipment and appliances as per list

280 lt refrigerator - Sink and faucet - Electric stove - 3 burners - Oven - Cabinets and drawers

1 master bedroom

Vinyl flooring - Double bed with mattress and drawers - Reading lights - Wardrobe and drawers
Lounge with armchair and table

2 double bedrooms

Vinyl flooring - Double bed with mattress and drawers - Reading lights - Wardrobe and drawers

4 bathrooms

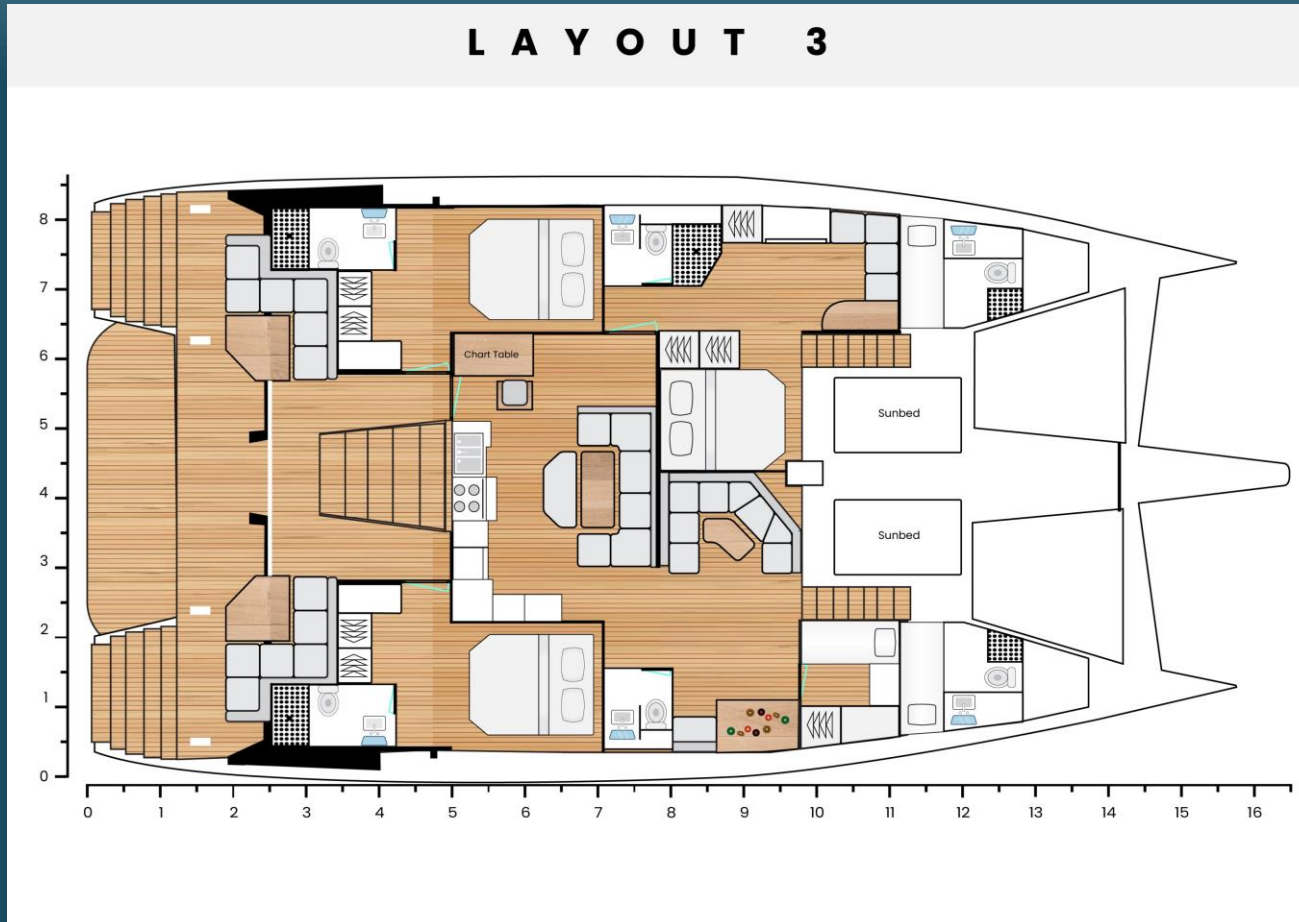
Vinyl flooring - Manual WC – Shower - Sink and faucet – Accessories - Cabinet

2 crew cabins

Single bed with mattress – Cabinet – Manual WC – Sink - Shower

• Layout n.3

1 master bedroom - 2 double bedrooms – 1 additional double bedroom
4 bathrooms – 1 crew cabins with bathroom



2 x C-shaped sofa – 2 x teak table – Chart table with seat – Lounge with bar counter and sofa on the right side - Vinyl flooring

Kitchen - equipment and appliances as per list

280 Lt refrigerator - Sink and faucet - Electric stove - 3 burners - Oven - Cabinets and drawers

1 master bedroom

Vinyl flooring - Double bed with mattress and drawers - Reading lights - Wardrobe and drawers
Lounge with armchair and table

2 double bedrooms

Vinyl flooring - Double bed with mattress and drawers - Reading lights - Wardrobe and drawers

1 additional double bedroom

Vinyl flooring – 2 x single bed with mattress – Wardrobe and drawers

4 bathrooms

Vinyl flooring - Manual WC – Shower - Sink and faucet – Accessories - Cabinet

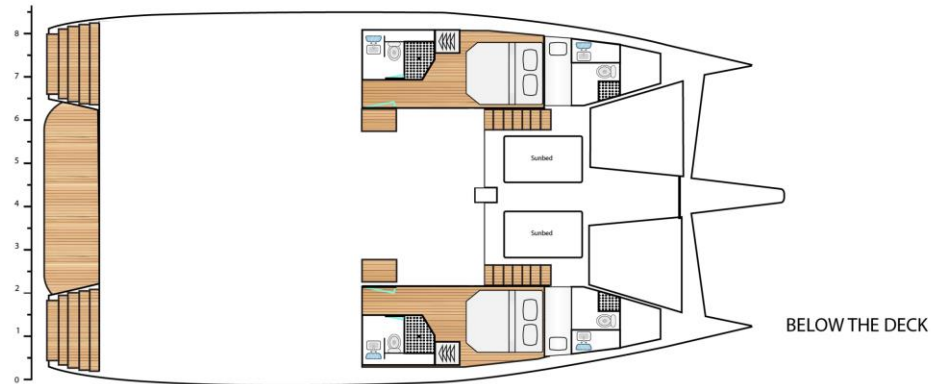
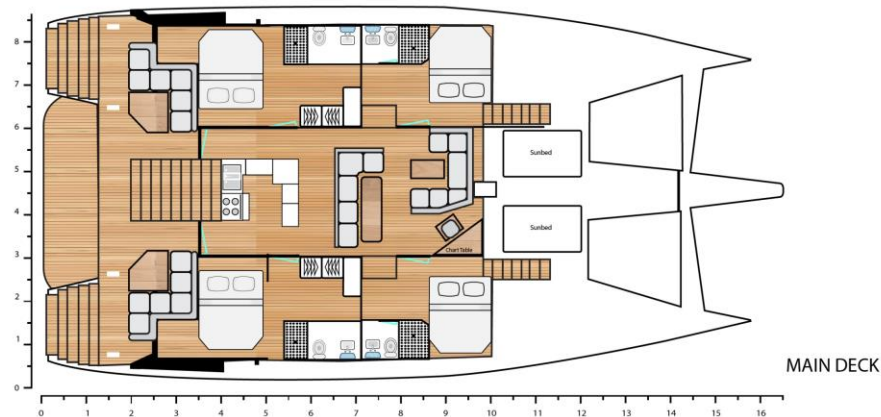
1 crew cabin

Single bed with mattress – Cabinet – Manual WC – Sink - Shower

Layout n.4

6 double bedrooms – 6 bathrooms – 2 crew cabins with bathroom

L A Y O U T 4



L-shaped sofa - Teak table – U-shape sofa – Teak table - Chart table with seat - Vinyl flooring

Kitchen - equipment and appliances as per list

280 lt refrigerator - Sink and faucet - Electric stove - 3 burners - Oven - Cabinets and drawers

6 double bedrooms (4 on the deck and 2 in the hulls)

Vinyl flooring - Double bed with mattress and drawers - Reading lights - Wardrobe and drawers

4 bathrooms (4 on the deck and 2 in the hulls)

Vinyl flooring - Manual WC – Shower - Sink and faucet – Accessories - Cabinet

2 crew cabins

Single bed with mattress – Cabinet – Manual WC – Sink - Shower