

Seaside
CATAMARANS

HQ – Bali

+62 813 8423 0193
(Italian – English)

Representative office - Italy

+39 345 344 5912
(Italian)

info@seasidecatamarans.com

Exclusive distributor Australia

Mr. John Unite

+44 7780 568 563

+62 851 9014 0675

johnunite@gmail.com



Seaside 54 Sail

www.seasidecatamarans.com

Seaside 54 Sail is the flagship of the Seaside Sail Collection, a range of sail catamarans designed for those who want to sail beyond, with total comfort and style

Bold design and engineering choices, with a linear and refined character, create a yacht with exceptional sailing performance and extraordinary beauty, expressed through its highly futuristic and revolutionary design

SEASIDE 54 Sail

Sailing in a sea of space!



Maximum comfort and spacious living areas, unparalleled in other boats of the same size: the external area measures 74 sqm, while the internal area is 62 sqm. Those who choose a catamaran seek ample space, and Seaside 54 Sail generously offers it.

Outdoor living is enjoyed at the bow, where two comfortable sunbeds are located, in the cockpit where one can dine or relax in the two lounges, on the flybridge which accommodates additional sofas and a table, as well as two steering areas. These spaces provide boundless livability and an extraordinary sense of freedom. However, the utmost attention has been given to the interior spaces, presenting innovative solutions such as the creation of spacious cabins at the deck level rather than in the narrow spaces of the hulls. There are various interior layouts, but they all share a common feature: the large saloon that houses the dining area, kitchen, and large windows that offer uninterrupted views, transforming the interior of the boat into a 360-degree spectacle. The cabins and bathrooms are located at the deck level, therefore larger than usual. The available layouts cater to every possible owner's need, with spacious cabins, comfortable lounges, and always available crew cabins.

By utilizing the entire deck level for the interiors, the available space in the hulls is optimized for technical services.

The hull design has been exclusively focused on navigation performance, without any constraints on habitability

Bow

The walkaround safely lead to the bow area where a generous sunbathing area awaits

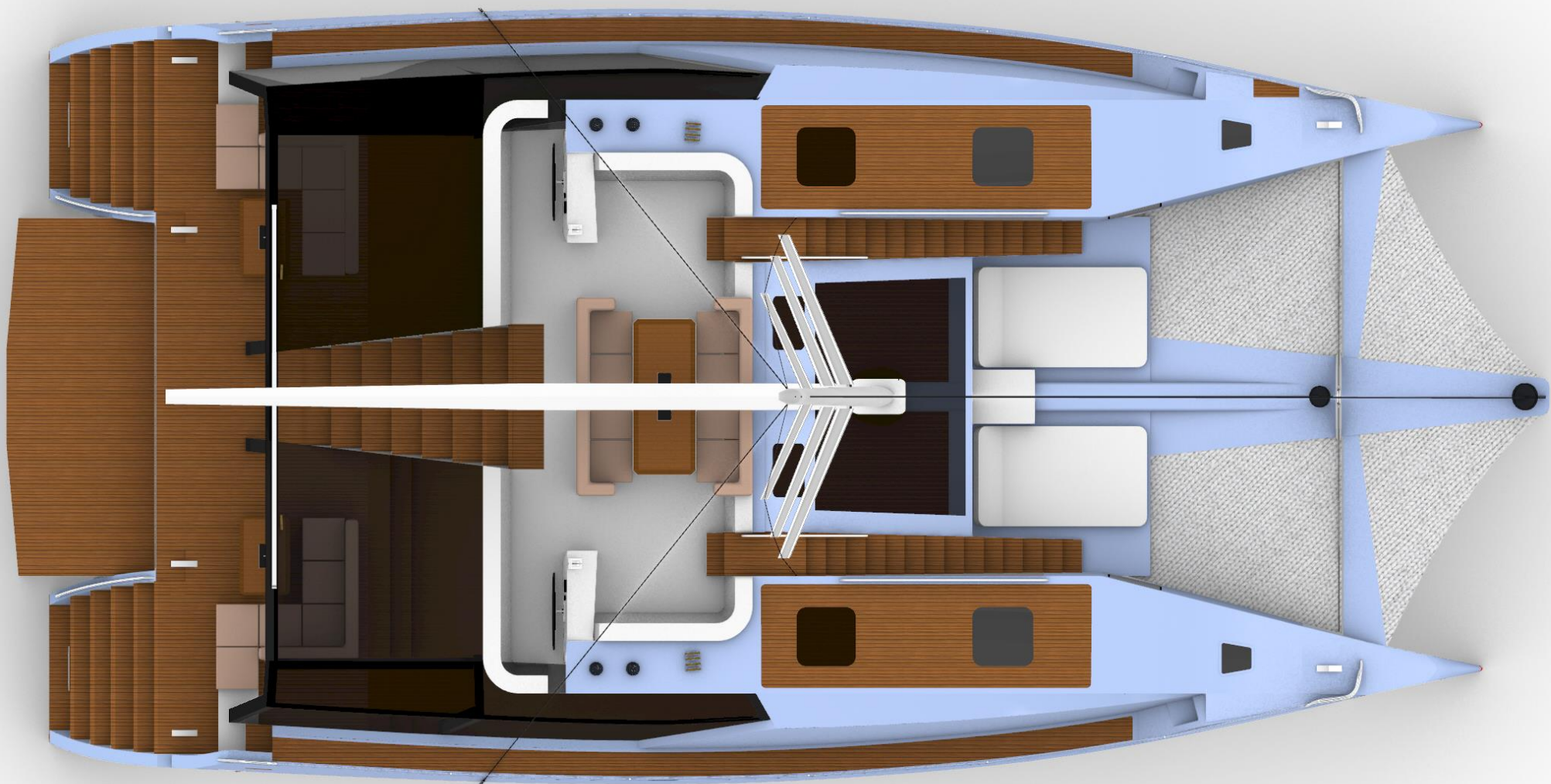
Fly bridge

Another strong point of Seaside 54 Sail is the large flybridge, accessible from both the stern through the wide staircase and the bow through the two side ladders. The flybridge accommodates two steering areas with dual instrumentation and a lounge consisting of two sofas and a teak table, which can be transformed into sunbeds



TECHNICAL SPECIFICATION

Overall length	16,47 mt – 54,00 ft
Hull length	16,00 mt – 52,50 ft
Max beam	8,65 mt – 38,27 ft
Draft	1,40 mt – 4,60 ft
Light weight / Full load weight	12.000 kg / 14.500 kg
Mast	20,50 mt
Sail	Main sail 105 sqm – Self-taking jib 35 sqm
Design category	CE A10 – B16 – C20 – D35
Beds	8 – 10
Engine	2 x inboard diesel 52 hp Vetus Sail Drive
Fuel tank	2 x 270 lt each
Fresh water tank	4 x 170 lt each
Black water tank	4 x 87 lt each
Design	Seaside Catamarans
Construction material	Sandwich – polyester resin - glass



SAIL PLAN

Mast and Boom

7/8 rig mast, 20,50 meters in height, anodized aluminum with a spreader plan - Three halyards led to the cockpit - Two reefing lines - Three cleats - One topping lift - Masthead light - Anodized aluminum boom with gooseneck + kicker strut - Two boom vang connections with led lines to the helmsman - Structural bowsprit with anodized aluminum martingale and bobstay

Z Spars Rigging

12mm stainless steel wire with turnbuckles - Diamond with two diagonal stays

Running Rigging

One halyard for mainsail and one for jib, a third halyard for optional second forestay sail - Lazy jacks at the mast base
Polyester mainsheet with tackle and led to the maneuvering station - Two automatic reef lines with return to the maneuvering station - Two polyester jib sheets with led to the maneuvering station - Two polyester gennaker sheets with led to the maneuvering station

Sails

Fully battened Dacron mainsail (105 sqm) - Self-tacking jib (35 sqm)
Two reefing lines with low-friction rings

Sail Handling

Mainsail: Complete 4:1 car system mounted on the coachroof with control lines led to the helm station with a two-speed ST40 winch and three Lewmar jammers

Jib: Complete system with control lines led to the helm station with a two-speed ST40 winch and two Lewmar jammers

Halyards and two automatic reef lines: All halyards and two reef lines return to the helmsman on a two-speed ST40 winch with six Lewmar jammers



ENGINE - PROPULSION - MANEUVERING EQUIPMENT

Propulsion

2 x inboard diesel engine 52 hp
Vetus
2 x Sail drive
2 x fixed pitch propeller
Soundproof panels in engine
rooms

Rudder & steering system

2 x rudder in fiberglass
Hydraulic steering system
Double raised helm station on
the right and left side

DECK EQUIPMENT

Accessories

2 x side platforms at stern
2 x stainless steel ladder
Fixed central platform at stern
Safety equipment locker
Fender locker
Windlass locker
Windlass
Stainless steel handrail
2 x fuel fillers
2 x water fillers
2 x black and grey water
discharge outlets
2 x engine room access hatches

EXTERIOR

Hull paint

Hull and deck in gelcoat

Deck

Composite with non-slip

Doors and windows

Fixed windows on the deckhouse
Portholes
Sliding aluminum door for access to
the deckhouse
6 x manhole

Deck furniture (stern and bow) as per layout

2 x L-shape sofa with cushions in the
cockpit
2 x teak table
Access ladder to the fly bridge
Walkaround
2 x sunbed at bow
Integrated lockers at bow
Bow net

Fly bridge furniture

2 x C-shape sofa with cushions
Teak table
65 lt refrigerator
2 x access ladder to the bow



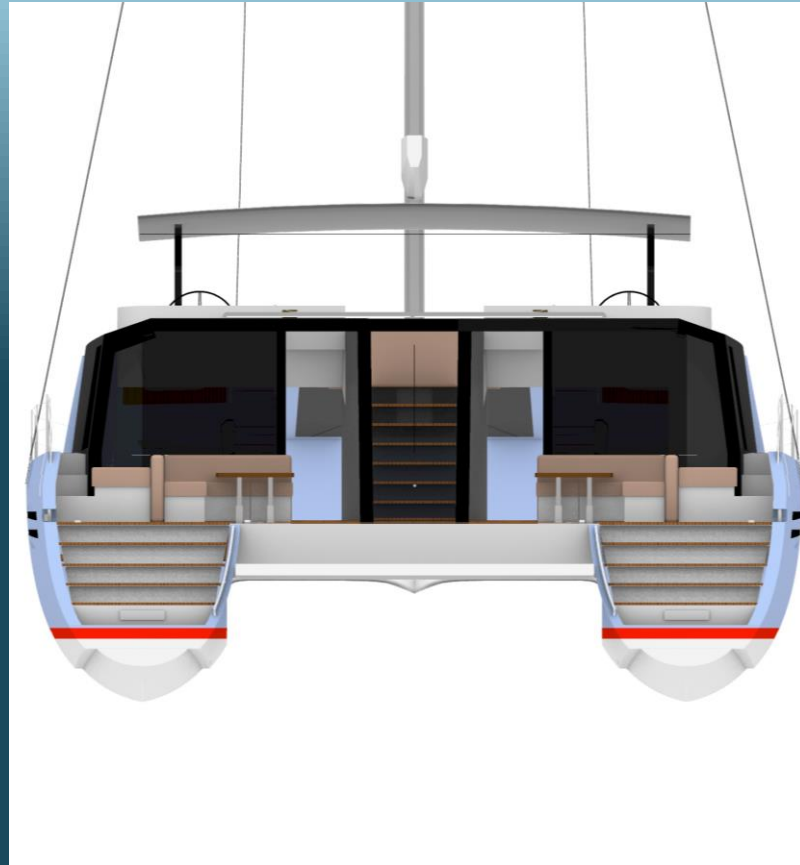
LIGHTS

Lighting system

LED lights on deck and cockpit
LED lights interiors
Lights in the engine room

NAVIGATION

Navigation lights
Compass
Horn



Hard top on the flybridge available

Seaside 54 Sail SOLAR



8KW solar system
for full electric
navigation



Layout n.1

4 double bedrooms – 4 bathrooms – 2 crew cabins with bathroom

L A Y O U T 1



L-shaped sofa - Teak table – U-shape sofa – Teak table -
Chart table with seat - Vinyl flooring

Kitchen - equipment and appliances as per list

280 lt refrigerator - Sink and faucet - Electric stove - 3
burners Oven - Cabinets and drawers

4 double bedrooms

Vinyl flooring - Double bed with mattress and drawers
Reading lights - Wardrobe and drawers

4 bathrooms

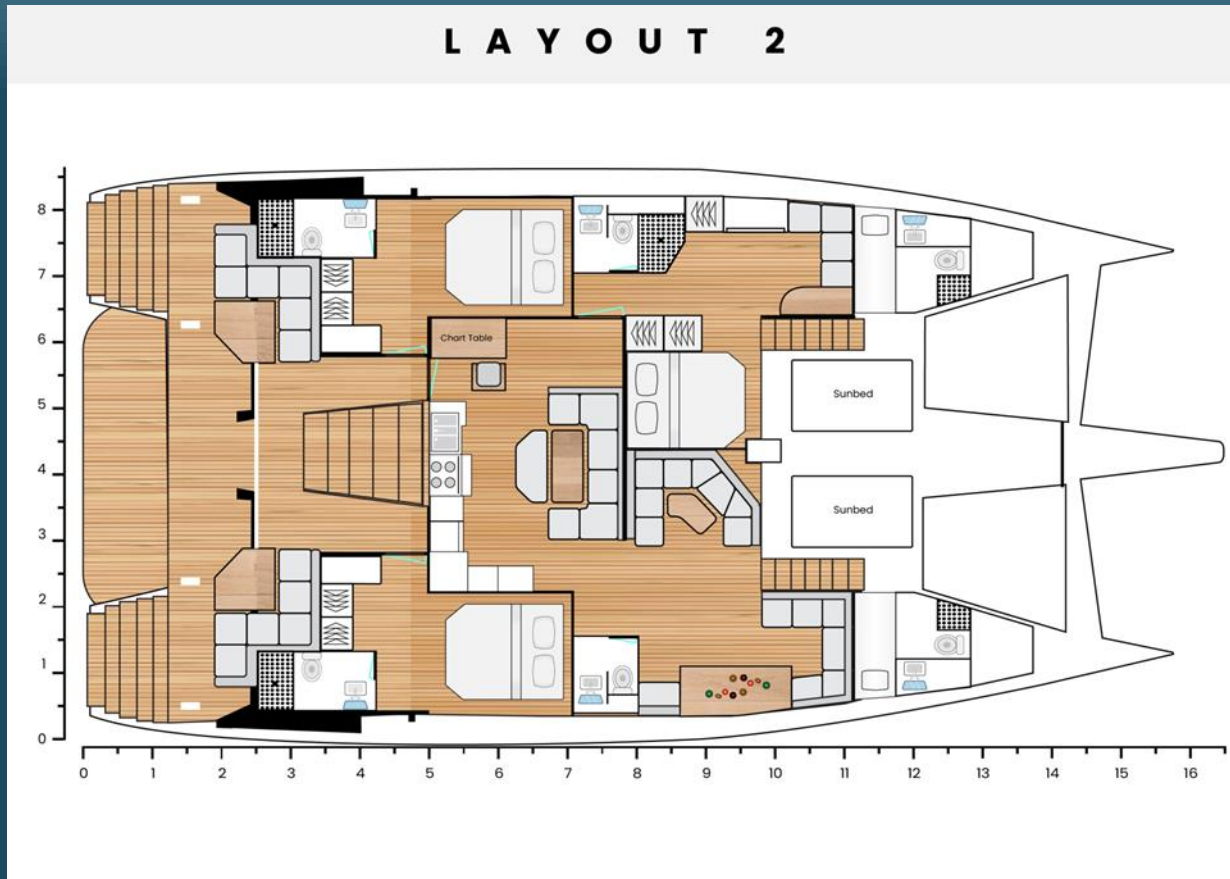
Vinyl flooring - Manual WC – Shower - Sink and faucet
Accessories Cabinet

2 crew cabins

Single bed with mattress – Cabinet – Manual WC – Sink
Shower

Layout n.2

1 master bedroom - 2 double bedrooms – 4 bathrooms – 2 crew cabins with bathroom



2 x C-shaped sofa – 2 x teak table – Chart table with seat – Lounge with bar counter and sofa on the right side - Vinyl flooring

Kitchen - equipment and appliances as per list

280 lt refrigerator - Sink and faucet - Electric stove - 3 burners
Oven - Cabinets and drawers

1 master bedroom

Vinyl flooring - Double bed with mattress and drawers
Reading lights - Wardrobe and drawers - Lounge with armchair and table

2 double bedrooms

Vinyl flooring - Double bed with mattress and drawers
Reading lights - Wardrobe and drawers

4 bathrooms

Vinyl flooring - Manual WC – Shower - Sink and faucet
Accessories - Cabinet

2 crew cabins

Single bed with mattress – Cabinet – Manual WC – Sink - Shower

Layout n.3

1 master bedroom - 2 double bedrooms – 1 additional double bedroom
4 bathrooms – 1 crew cabins with bathroom

L A Y O U T 3



2 x C-shaped sofa – 2 x teak table – Chart table with seat – Lounge with bar counter and sofa on the right side - Vinyl flooring

Kitchen - equipment and appliances as per list

280 lt refrigerator - Sink and faucet - Electric stove - 3 burners - Oven
Cabinets and drawers

1 master bedroom

Vinyl flooring - Double bed with mattress and drawers - Reading lights
Wardrobe and drawers - Lounge with armchair and table

2 double bedrooms

Vinyl flooring - Double bed with mattress and drawers - Reading lights
Wardrobe and drawers

1 additional double bedroom

Vinyl flooring – 2 x single bed with mattress – Wardrobe and drawers

4 bathrooms

Vinyl flooring - Manual WC – Shower - Sink and faucet – Accessories -
Cabinet

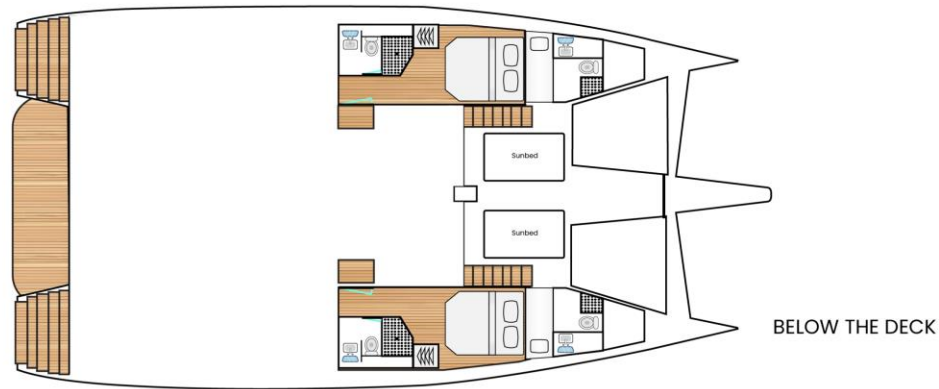
1 crew cabin

Single bed with mattress – Cabinet – Manual WC – Sink - Shower

Layout n.4

6 double bedrooms – 6 bathrooms – 2 crew cabins with bathroom

L A Y O U T 4



L-shaped sofa - Teak table – U-shape sofa – Teak table -
Chart table with seat - Vinyl flooring

Kitchen - equipment and appliances as per list

280 lt refrigerator - Sink and faucet - Electric stove - 3
burners Oven - Cabinets and drawers

6 double bedrooms

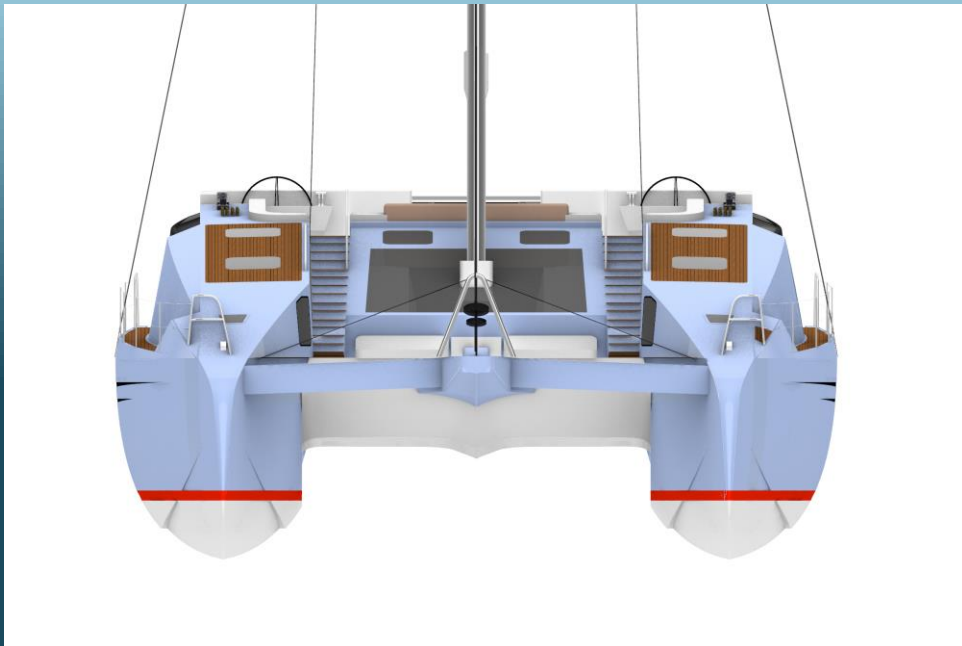
Vinyl flooring - Double bed with mattress and drawers
Reading lights - Wardrobe and drawers

6 bathrooms

Vinyl flooring - Manual WC – Shower - Sink and faucet
Accessories Cabinet

2 crew cabins

Single bed with mattress – Cabinet – Manual WC – Sink
Shower



ELECTRIC SYSTEM

AC electrical power system

230V system and wiring - 230V control panel - External 230V socket

230V sockets: one in each cabin, two in the salon, one in each bathroom, two in the galley

USB sockets for charging: two in each cabin and two in the salon

DC electrical power system

12V system and wiring - 12V control panel - Engine start batteries - Utility batteries

SYSTEMS AND PIPING

Fuel system

2 x 270 lt fuel tank - Fuel filters

Fresh water system

4 x 170 lt fresh water tank - 2 x water pressure pump - Water distribution system - Water heater

Grey water system

2 x 130 lt grey water tank - Drainage system

Black water system

4 x 87 lt black water system - Drainage system

Bilge system

4 x automatic bilge pump - 2 x hand bilge pump - Pipes and valves

Firefighting system compliant with RINA regulations

2 x automatic fire extinguisher in engine rooms - 3 x fire extinguisher

